

Back Boxes

Our range of plastic back boxes are cost effective solutions for a wide range of surface mount applications.



Manufactured in tough ABS, they are much less brittle than traditional electrical back boxes and, so, less prone to damage during installation.

Single gang variants are designed for use with 86mm x 86mm faceplates and are available in four depths (21mm, 32mm, 37mm and 45mm).

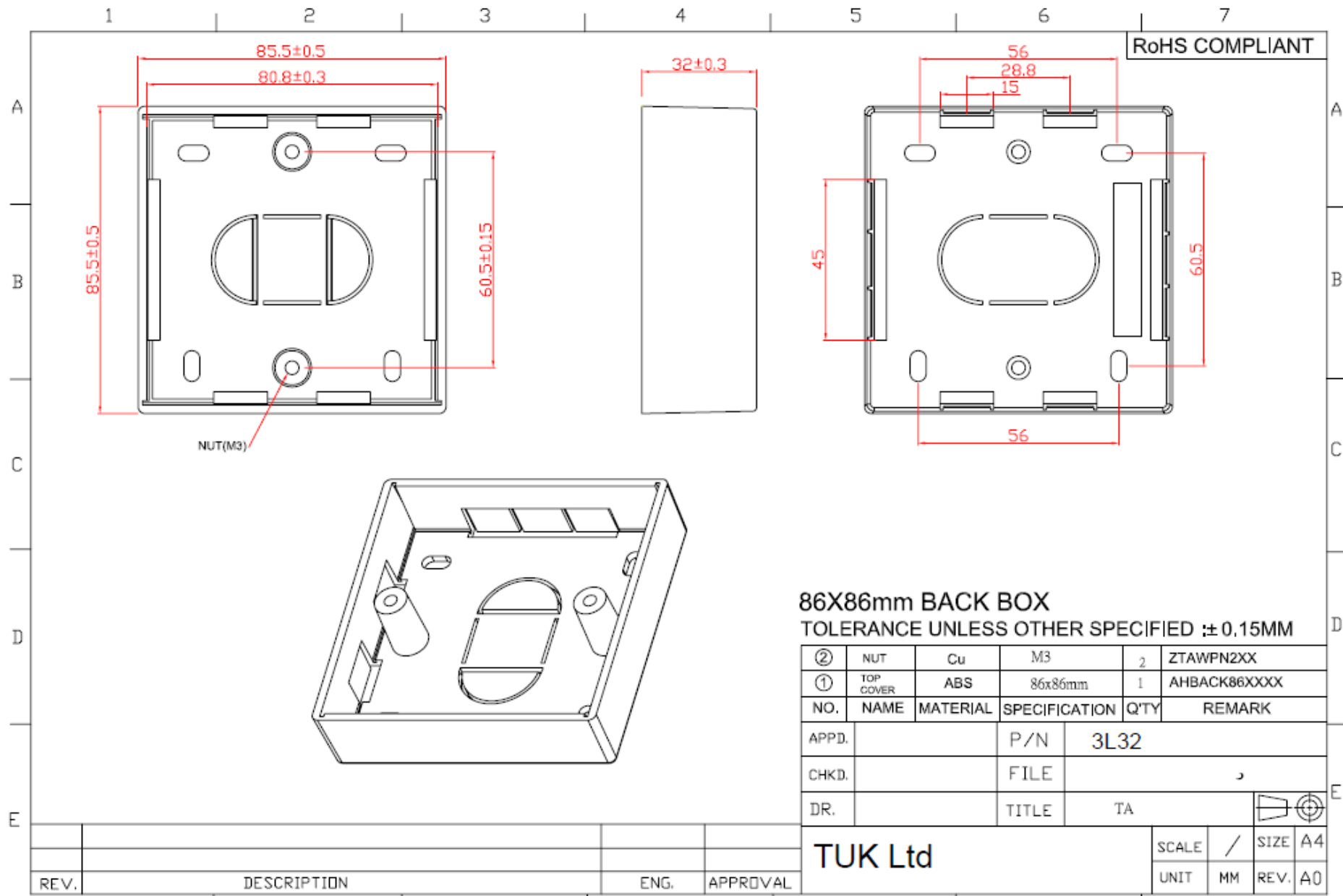
Double gang variants accept 146mm x 86mm faceplates and are available in three depths (32mm, 37mm and 45mm).

The standard colour for all variants is bright white.

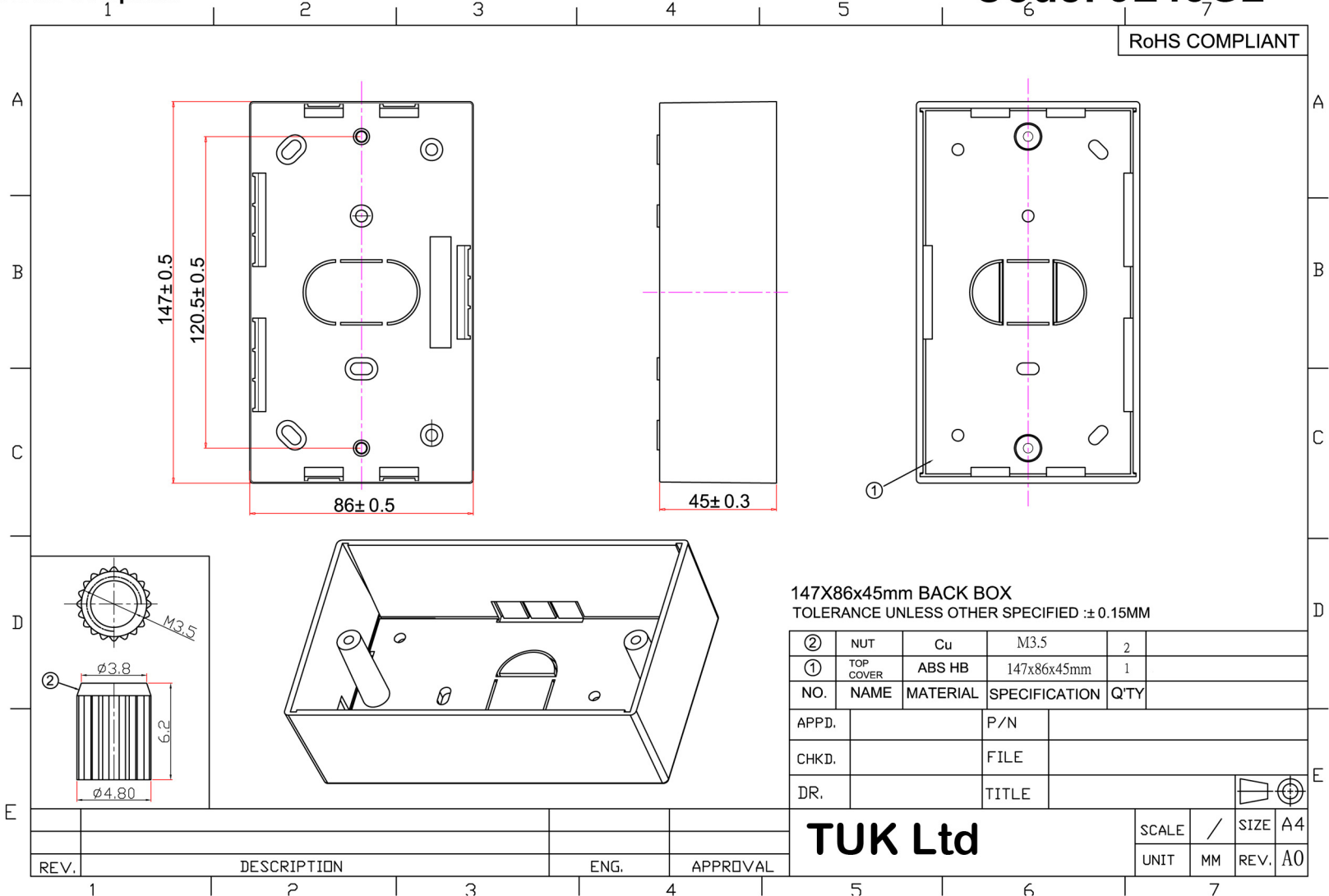
All variants feature a selection of mounting holes for ease of installation. There are cable entry knockouts on all sides of the back box as well as the base for maximum flexibility.

Code	Description	Inner Carton Quantities	Outer Carton Quantities
3L21	21mm deep (18mm internal clearance) single gang pattress backing box	20	200
3L32	32mm deep (29mm internal clearance) single gang pattress backing box	20	100
3L32G2	32mm deep (29mm internal clearance) double gang pattress backing box	10	100
3L37	37mm deep (34mm internal clearance) single gang pattress backing box	20	100
3L37G2	37mm deep (34mm internal clearance) double gang pattress backing box	10	100
3L45	45mm deep (42mm internal clearance) single gang pattress backing box	20	100
3L45G2	45mm deep (42mm internal clearance) double gang pattress backing box	10	100

Other variants are available to special order.



TUK Ltd, Unit 4, Wimbledon Stadium Business Centre, Riverside Road, London, SW17 0BA

ROHS Compliant
Code: 3L45G2

147X86x45mm BACK BOX
 TOLERANCE UNLESS OTHER SPECIFIED :± 0.15MM

②	NUT	Cu	M3.5	2	
①	TOP COVER	ABS HB	147x86x45mm	1	
NO.	NAME	MATERIAL	SPECIFICATION	Q'TY	
APPD.			P/N		
CHKD.			FILE		
DR.			TITLE		

TUK Ltd

SCALE	/	SIZE	A4
UNIT	MM	REV.	A0