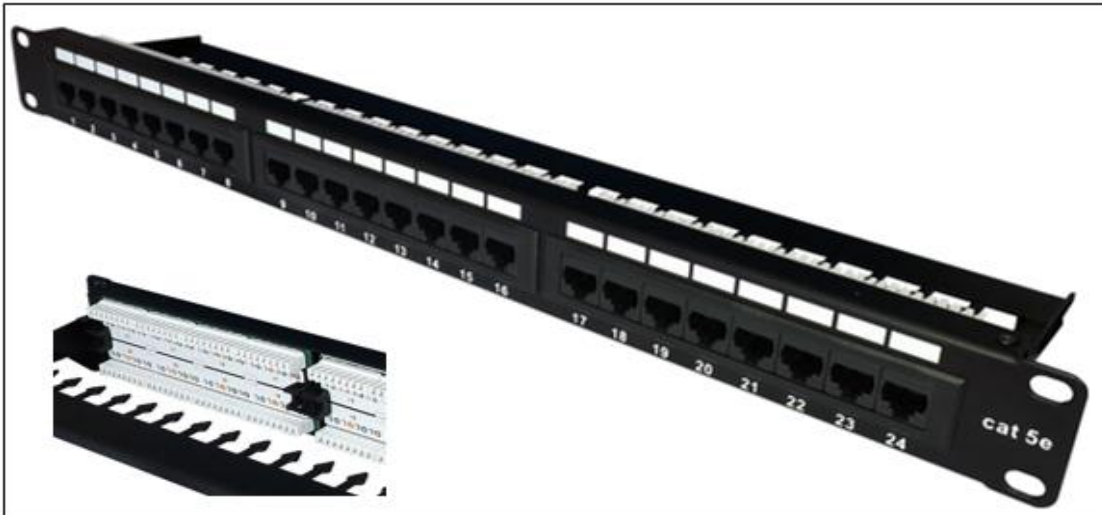


## 24 port Category 5e patch panel



### **24 port Category 5e patch panel (FF24sh)**

TUK's high density vertical Cat 5e Patch Panel is designed to provide flexible cable management, space saving and easily identifiable labelling for optimum installation efficiency.

#### **Features**

- Performs to Category 5e permanent link level
- Supplied with easily removable metal rear cable management bar
- Fitted with individual colour coded labels and port numbering for easy T568B wiring at rear of panel
- Accommodates LSA+ type termination tools
- Supplied with cage nut kit and cable ties
- Printed with numbered ports and labelling facility

#### **Specifications**

- Weight: 840g (in packaging)
- Colour: black (other colours available to order)
- Frame: carbon steel
- Contacts: gold over nickel over phosphor bronze
- Dimensions: 483 x ? x 44mm (WxDxH) d = 94mm with management bar, or 29mm without

ROHS Compliant

Code: FF24sh

